

Radio transmitters TEL433 for vehicle entry points

TEL433 CODED RADIO TRANSMITTER



Front

Please advise us of the unique number engraved on each of the TEL433 radio transmitters belonging to your household.



Back



Side

Dimensions: 63mmL x 40mmW x 12mmD
Battery: Panasonic CR2032

Email: fobs@nacd.co.uk

BUY ONLINE AT WWW.NACD.CO.UK

ORDERING INSTRUCTIONS

Please ensure when you place your order that you include the following:

1. Your full name.
2. Your full address including postcode.
3. The full delivery address including postcode. Radio transmitters are sent by 1st class recorded delivery and will need to be signed for.
4. Your contact telephone numbers.
5. The name of your block/building.
6. The name of the management company or housing association (if known).
7. The number engraved on the radio transmitter(s) you already have.
8. The cheque for the correct amount made payable to NACD Ltd or, if you wish to pay by credit card, please include a daytime telephone contact number.
9. Please send your order to:

NACD Ltd – Access Pass Dept.,
Unit 8, Heron Business Park,
Eastman Way,
Hemel Hempstead,
Hertfordshire,
HP2 7FW.

Your radio transmitter(s) will be automatically programmed* into the relevant gates and barriers as required for your development. Please contact us on 08700 333388 if you experience any problems. Thank you.

PRICE PER UNIT

Qu.	Price each	Total nett	Total inc. 20% VAT	P+P inc. VAT	Total to send
1	£64.00	£64.00	£76.80	£3.90	£80.70
2	£48.00	£96.00	£115.20	£3.90	£119.10

* IMPORTANT

Prices include programming BUT ONLY only if we have remote access which means (i) our BATICONNECT CLOUD system has been installed which automatically has remote access provision supplied by NACD, or for non-CLOUD based systems (ii) Broadband services have been provided (by the builder/client) to enable remote access. Obviously, for non-CLOUD based systems, no broadband means that every system change will require a chargeable engineer callout with costs and response times subject to site location and engineer availability.

NOT TO SCALE

Access Pass Programming



ACCESS PASS PROGRAMMING

Dear Resident

If NACD is the manufacturer and supplier of the proximity keys and radio transmitters for your address, **then the price you have paid for the purchase and delivery of these access passes includes the programming BUT only strictly subject to the following:**

1. NACD has remote programming access to the resident communal access control system.
This is only possible if (i) our latest technology BATICONNECT CLOUD system, available from 2018, has been installed which automatically has remote access provision supplied by NACD, or for non-CLOUD based systems (ii) Broadband services have been provided (by the builder/client) to enable remote access.

Obviously, for non BATICONNECT CLOUD systems, no broadband means that every system change will require a chargeable engineer callout with costs and response times subject to site location and engineer availability.

2. NACD is authorised to have remote programming access to the resident communal access control system.

If the installation was by a third party or the management company have employed others to manage the system, then we might not have remote programming access rights to your site even if our BATICONNECT CLOUD is being used, or broadband services have been provided. You will need to contact the management company for further information.

What happens if my proximity key and/or radio transmitter does not work when it arrives?

3. If NACD has remote programming access and authorisation, we will programme everything free of charge for you. Your proximity key and/or radio transmitter has a unique number engraved on it, so please simply email your address and the numbers engraved on your access passes to: maintenance@nacd.co.uk and advise them of the problem.
4. If NACD does not have remote programming access BUT does have programming rights, see point 1 above, then we can only programme your access passes by actually sending an engineer to site which is expensive and inefficient. We understand and share your annoyance and frustration because we want to help you, but without remote programming access it is obvious that programming cannot be provided free of charge. Please speak to your resident association so that they instruct the management company to provide broadband services on our older non BATICONNECT systems.
5. If NACD was not the installer of the system, or does not have authorisation to programme the system, you will need to contact your management company for further information.

NACD Limited
Unit 8, Heron Business Park, Eastman Way, Hemel Hempstead, Hertfordshire, HP2 7FW.
Tel: 01442 211848 Fax: 01442 212776 Email: estimating@nacd.co.uk Web: www.nacd.co.uk
www.ipguard.co.uk
Registered in England No. 3212230 c/o The HWC Partnership Ltd, 52 High Street, Pioneer NAS SPW VAT Reg No. GB 695 1188 04.



visitor door entry – so obviously as it should be
video to your phone, fully cloud based

NATIONAL SECURITY INSPECTORATE (NSI)

Code of Practice for Design, Installation and Maintenance of Access Control Systems NCP 109 (Issue 1) July 2012

NCP 109 (ISSUE 1) JULY 2012

The successful operation of an access control system... **The usefulness of the whole system and its security** and social acceptability **can be jeopardised by lack of care.**

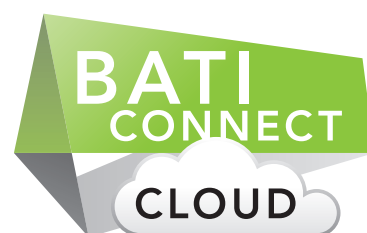
This care has to extend to the **security of credentials such as tokens** and of information regarding the system, its design, installation and method of operation and to ensuring adequate maintenance, to preserve the security of access.

2.11 Credential. Any token or memorised information or biometric used to identify an individual to an access control system in order to verify user access.

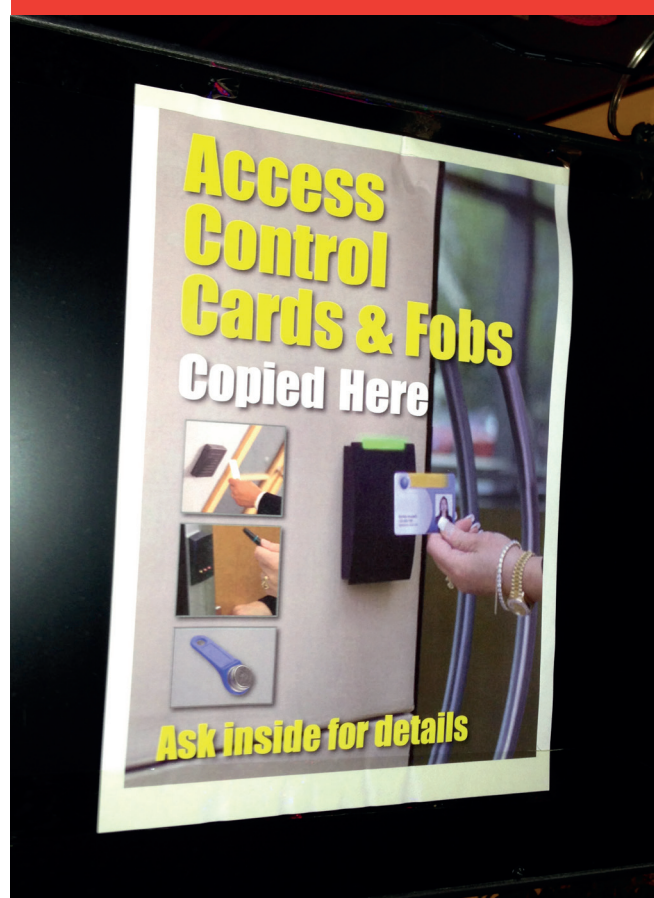
NACD ADVISES:

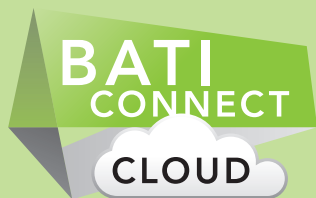
Your client / development must be supplied with **security-encrypted**, visibly ID numbered, completely traceable proximity keys and radio transmitters.

Unscrupulous locksmiths and newsagents do not care about the security of your building and **are making unauthorised copies** of proximity keys and radio transmitters. Make sure your building and residents are protected against forgeries by using **security-encrypted** proximity keys and radio transmitters, and ask for confirmation of security protection cover level.



THIS MUST BE PREVENTED!





Total real-time management of all your sites

www.baticonnect.com

■ GUARANTEED ANTI-CLONE PROTECT™

The most important security requirement: GUARANTEED protection against unauthorised entry into buildings using multiples of a copied/cloned proximity key, and the same for radio transmitters for vehicle gates!

- Attempted fraudulent entry logged and alerts generated for management.
- Forever upgradeable via BATICONNECT CLOUD™
- 24/7/365 remote access for management for all programming, resident and visitor data etc, www.baticonnect.com (no software required).

■ PROGRAM ALL SYSTEMS, PANELS, CREDENTIALS REMOTELY

- Programming without software via the cloud
- Real-time updates
- Modern and easy; NO programming readers required for proximity keyfobs, radio transmitters. This is only possible because the credentials (proximity keyfobs and radio transmitters) are, in addition to being security encrypted to prevent cloning, each stamped with a unique scheme ID number plus sequential user ID number (the highest level of security and most rigid key control).



Display names, details



Proximity keyfobs



Keypad codes



Radio transmitters



Keysafes

AND MORE

- **ALERT NOTIFICATIONS**
SMS / Email notifications of forced doors, faults on 3rd party systems etc.
- **COMMUNICATE DIRECTLY WITH RESIDENTS**
Use BATI CONNECT to send SMS messages directly to your residents.
- **EVENT LOGS**

■ RESIDENT ACCESS CONTROL

• PROGRAMME ACCESS RIGHTS



Date period validity

Example: From 28th Sept – 14th Dec 2016



Time zone validity

Example: from 0800 – 2000hrs Mon-Fri



Door / Gate validity

Create door/gate authorisation profiles

CHOOSE MEANS OF ACCESS



Proximity keyfobs



Radio transmitters



Keypad code access for facilities



Telephone

■ FLEXIBLE MULTI-MANAGER SYSTEM

• PROGRAMMING AUTHORISATION LEVELS

Set programming level rights according to requirements for different facilities: Management, Service, Concierge etc

• TRANSFER ACCOUNTS , AMEND WHO CONTROLS WHICH SITES

Management and service companies change. There may be numerous different contractors on a particular site. Ownership and responsibility for blocks / cores on a site are often mixed.

Control and set authorisations as required via BATI CONNECT cloud.



SECURED BY DESIGN 2014 ONWARDS: ELECTRONIC ACCESS CONTROL SYSTEMS

Compliance requirements (1)

PROXIMITY KEYFOBS



KCP4000

Proximity keyfobs must be security encrypted to prevent unauthorised copying. Confirmation of security protection cover is required.

SBD 2014 (and subsequent unless advised otherwise)

A1.1 **Proximity keys must be security encrypted to protect against unauthorised copying...**

(obviously same applies for radio transmitters)

RADIO TRANSMITTERS



TEL433

Radio transmitters must be security encrypted to prevent unauthorised copying. Confirmation of security protection cover is required.

SBD 2014 (and subsequent unless advised otherwise)

38.1.1 **An access control system must be applied to all vehicular and pedestrian entrances to prevent unauthorised access in to the car park.**

38.1.2 Inward opening **automatic gates or roller grilles** must be located at the building line or at the top of ramps to avoid the creation of a recess. **They must be capable of being operated remotely by the driver whilst sitting in the vehicle**, the operation speed of the gates or shutters shall be as quick as possible to avoid tailgating by other vehicles. **This will allow easy access by a disabled driver**, and should satisfy the requirements...

RADIO ACCESS CONTROL FOR VEHICLE GATES IS ALSO REQUIRED FOR EQUALITY ACT 2010 COMPLIANCE.

Proximity keyfob and radio transmitter system must be fully networked

SBD 2014 (and subsequent unless advised otherwise)

A1.3 **Every proximity access controlled door and radio access controlled vehicle entrance will be included on the network.**

The access control system will have the facility to record and identify the location, user, type, time and date of every system event.







Sufficient memory storage must be available for a period of not less than 30 days. **The system will be fully programmable**, with access restricted to the nominated system controller(s) who will be **able to manage the system via remote access in order to expeditiously delete lost or stolen proximity key fobs and radio transmitters.**

Proximity keyfobs and radio transmitters must be remotely programmable = **COMMS REQD!**

SBD 2014 (and subsequent unless advised otherwise)

A3.3 **The communications package required for full remote connectivity of the visitor door entry, resident access control and CCTV systems must be live at handover** and demonstrated to the DOCC.

Have you been supplied with the correct proximity keys and radio transmitters?

MAKE SURE YOU RECEIVE MODERN, SECURE AND EASILY MANAGEABLE PROXIMITY & RADIO ACCESS PASSES				
	Proximity Keyfob Type	Security Encryption	SBD 2014 Compliant	Action
BEST PRACTICE	Visible unique ID number on each proximity keyfob and radio transmitter. All are site and sequentially numbered.	MIFARE (2 ND Gen), DESFIRE.	YES	<p>Most advanced manufacturing process and obviously the best. The visible unique ID number on each proximity keyfob and radio transmitter identifies the site (scheme) and the user.</p> <p>Example key numbers: 9184500001, 9184500002, 9184500003 etc.</p> <p>Only this numbering system technology enables batch loading and deleting, total accuracy and control, and full audit traceability from manufacturer to end-user.</p>  <p>etc.</p> <p>Logical and sequential numbering</p>
				
MINIMUM LEVEL	Visible unique ID number on each proximity keyfob and radio transmitter.	MIFARE (2 ND Gen), DESFIRE.	YES	<p>The system owner and user can accurately identify the proximity keyfob and radio transmitter simply by looking at it.</p> <p>Example key numbers: 2398165095, 9278276028, 1067939890 etc.</p>  <p>Random numbering</p>
DO NOT USE: SUB-STANDARD TECHNOLOGIES	NO visible ID number on the proximity keyfob and radio transmitters. Manufacturer states "use colour tags to differentiate & administer"	MIFARE (2 ND Gen), DESFIRE.	YES	<p>DO NOT USE. Old technology manufacturing process cannot factory imprint unique ID number onto each proximity keyfob and radio transmitter.</p> <p>Administrator is forced to either buy a mix of coloured proximity keys, attach colour stickers / tags, or physically mark each key with a coloured pen. It is labour intensive, complicated and inherently inaccurate "people will make errors". It is fundamentally flawed, make sure that you are not supplied with old technology.</p> 
	125 or 153Khz technology	None	NO	<p>TOTALLY UNACCEPTABLE for all new developments / systems. Existing and growing unauthorised copying of proximity keys and radio transmitters voids security for residents. Start planning switch-over upgrade strategy for existing buildings (talk to manufacturer / supplier).</p>
				

Check that you have been supplied with the correct proximity keys and radio transmitters

PROXIMITY KEYS & RADIO TRANSMITTERS MUST EACH HAVE A VISIBLE UNIQUE ID NUMBER

EXISTING SECURITY PRINCIPLES FOR HIGH SECURITY MECHANICAL KEYS:

KABA Master Key System

- The system owner is the “responsible person” and must use a registration card which carries the “responsible persons” signature and **unique system number** in order to purchase keys.
- A tailor-made key plan including **a logical key and cylinder numbering** system that is flexible enough to last.

ASSA ABLOY Master Key Solutions Planned Systems with complete support

Multi level — Level 3

This is the **highest level of security** and offers the **most rigid key control**.

- Each key will be **stamped with a unique system number and key reference**.
- The keys can be **sequentially numbered to assist the end user in recording who has been given which individual key**.

YALE PRO-KEY [Master Key System] BSEN1303 Grade 5 [or CEN5]

- The Yale Key **ID number is stamped on the key** and the cylinder, **it identifies the dealer, suite number and key reference**.

THE SAME SECURITY PRINCIPLES APPLY TO ELECTRONIC KEYS & TRANSMITTERS.

Proximity key fobs and radio transmitters are the electronic equivalent of mechanical keys.

Identification, numbering, monitoring, controlling and recording (traceability) of proximity key fobs and radio transmitters must follow the same successful procedures already existing for high security mechanical keys.

Proximity key fobs and radio transmitters must each have a factory engraved or **stamped visible unique ID number** to facilitate control of the system by the system owner and residents. Proximity key fob and radio transmitter numbers supplied for a residential building must be recorded by both the manufacturer and the security installer, and a list of these numbers together with the **unique identifying scheme or site number** provided to the system owner. Each resident must be able to **look at** a proximity key fob and radio transmitter and read **its number**.

The **unique visible ID number** on a proximity key fob and radio transmitter must enable the manufacturer to advise the authorised parties; when the access pass was supplied, the purchaser and the system owner.

KCP4000 Proximity Keyfob



- KCP4000 proximity keys are each **engraved with a unique 10 digit ID number**.
- The first 5no digits **identify the scheme/site**, the last 5no digits **identify the user**.
- They are also **sequentially numbered** for ease of administration control and security.

TEL433 Coded Radio Transmitter

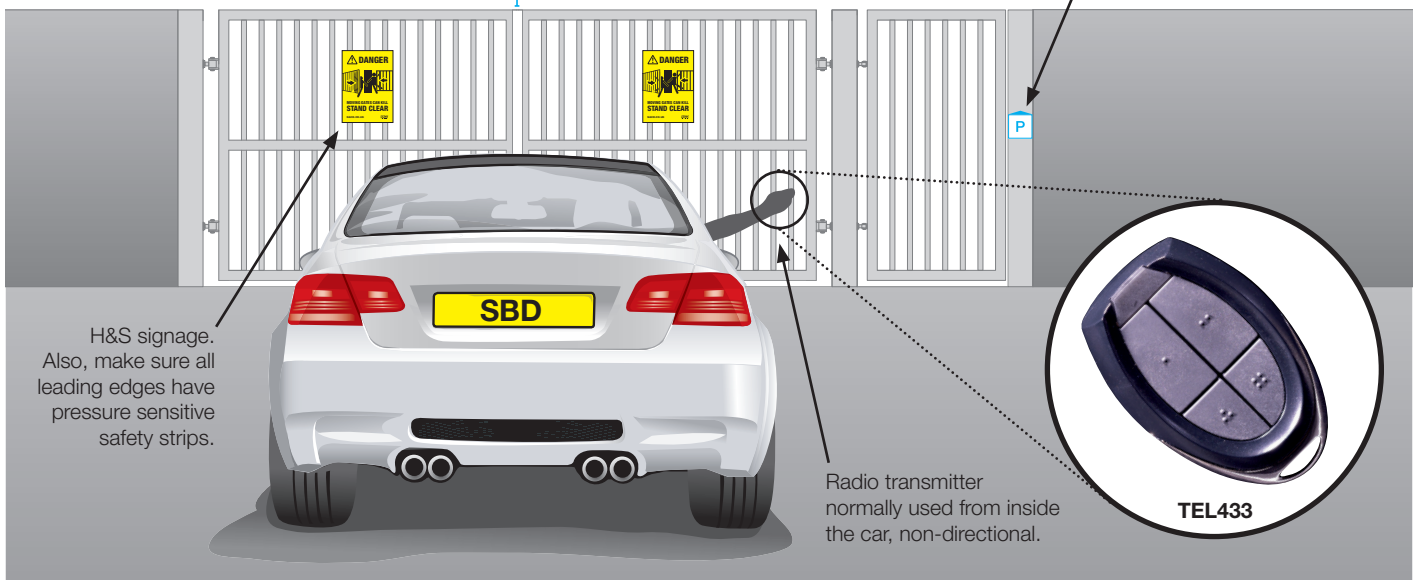


- TEL433 radio transmitters are each **engraved with a unique 10 digit ID number**.
- The first 5no digits **identify the scheme/site**, the last 5no digits **identify the user**.
- They are also **sequentially numbered** for ease of administration control and security.

Vehicle Entrances must be part of an integrated access control strategy

Radio access control for vehicle gate, security encrypted with rolling code, networked, remotely programmable for SBD 2014 onwards compliance.

Proximity access control for pedestrian gate, security encrypted, networked, remotely programmable for SBD 2014 onwards compliance.



The security encryption / identification / standards of the radio access control transmitters and the associated networked programming administration (on-site and remote) must be the same as for the proximity access control system. Both the radio and the proximity access control should be on the same network and share the same access control platform and programming. Whatever you are able to program to, or information you are able to obtain from, the proximity access control readers and keyfobs – the same must be available to/from the radio access control receivers and transmitters.

Radio transmitters must be security encrypted to prevent unauthorised copying. Confirmation of security encryption is required.

TICK ☐

SBD 2014 (and subsequent unless advised otherwise)

38.1.1 An access control system must be applied to all vehicular and pedestrian entrances to prevent unauthorised access in to the car park.

38.1.2 Inward opening automatic gates or roller grilles must be located at the building line or at the top of ramps to avoid the creation of a recess. They must be capable of being operated remotely by the driver whilst sitting in the vehicle, the operation speed of the gates or shutters shall be as quick as possible to avoid tailgating by other vehicles. This will allow easy access by a disabled driver and should satisfy the requirements...

RADIO ACCESS CONTROL FOR VEHICLE GATES IS ALSO REQUIRED FOR EQUALITY ACT 2010 COMPLIANCE.

Proximity keyfob and radio transmitter system must be fully networked

TICK ☐

SBD 2014 (and subsequent unless advised otherwise)

A1.3 Every proximity access controlled door and radio access controlled vehicle entrance will be included on the network. The access control system will have the facility to record and identify the location, user, type, time and date of every system event. Sufficient memory storage must be available for a period of not less than 30 days. The system will be fully programmable, with access restricted to the nominated system controller(s) who will be able to manage the system via remote access in order to expeditiously delete lost or stolen proximity key fobs and radio transmitters.

Proximity keyfobs and radio transmitters must be remotely programmable = COMMS REQD!

TICK ☐

SBD 2014 (and subsequent unless advised otherwise)

A3.3 The communications package required for full remote connectivity of the visitor door entry, resident access control and CCTV systems must be live at handover and demonstrated to the DOCO.