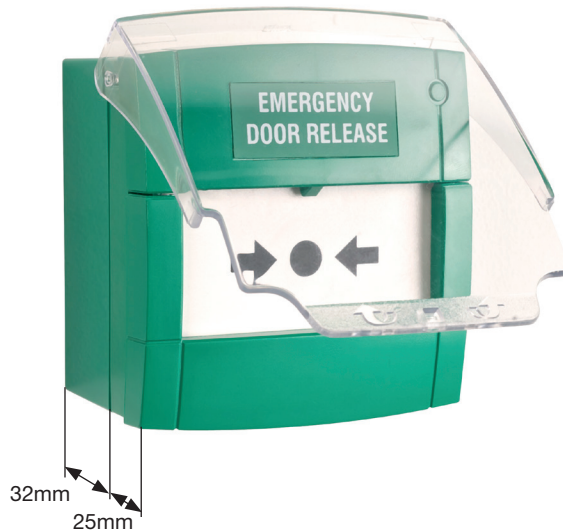


EMEX-FL (KAC) Emergency Door Exit Breakglass Unit with Flip Lid

Q N° 050



EMEX-FL (KAC)



Dimensions code: 93mmH x 89mmW x 60mmD

DOWNLOAD IMAGE

Internet connection required

NOTES

60mmD = Lid and backbox

EMEX-FL

Green resettable breakglass emergency exit unit with flip lid.



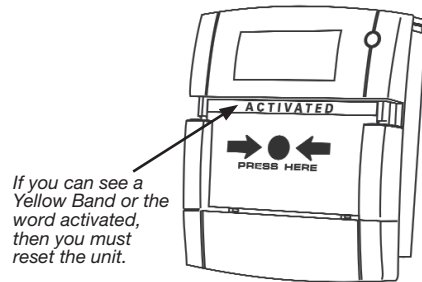
Reset instructions for emergency breakglass unit ref. EMEX-FL (KAC)

Q N° 051

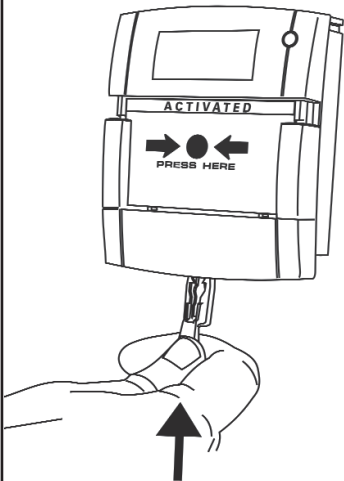
1 This is how the green breakglass should look.



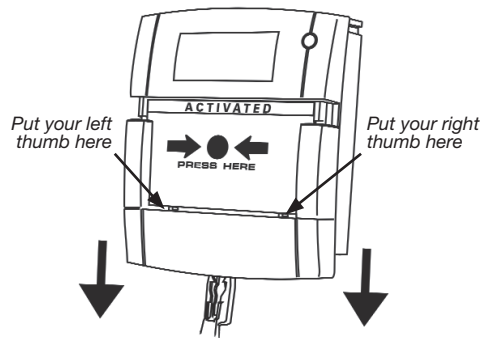
2 This is what it looks like if it has been activated.



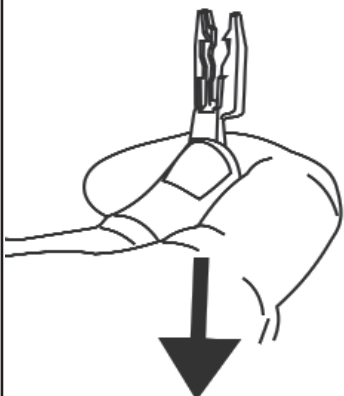
3 To reset, insert the black plastic reset key.



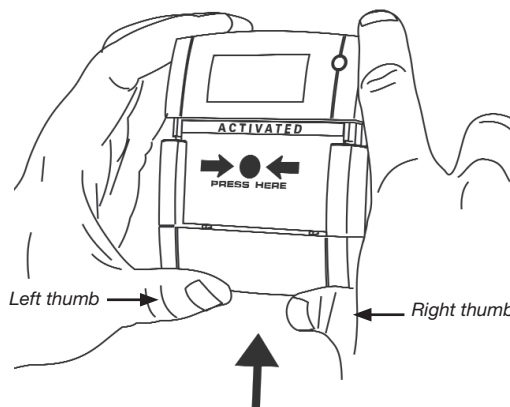
4 Leaving the black plastic reset key inserted, use your thumbs to pull down gently about 10mm.



5 Now gently remove the black plastic reset key.



6 Hold the breakglass as shown and, using medium force, push up with both thumbs simultaneously. You will see the yellow activated band disappear and will hear a click. If the unit now looks like picture no 1, you have correctly reset the breakglass unit. Now check that the door has relocked.



“The door is not locking, it stays open!”

This is probably because the green emergency breakglass unit has been activated.

This is a device installed for your safety.

When it is activated it always breaks the power to the electric locking so that the 12VDC fail safe locking **FAILS** and you can get out of the building safely.

If you can see a **thin yellow band** at the top of the white resettable plate in the middle of the breakglass unit — then you know somebody has activated the unit.

Now you know that the door is **NOT LOCKING** because the emergency exit safety device has been activated !

You need to reset the green breakglass using the special black plastic key — as shown in the pictures.

I confirm that I accept full call-out charges (even for door entry and access control systems under maintenance contract cover) if the reason that the door is not locking is related, in any way whatsoever, to the green breakglass unit.

For example, the green breakglass unit has been activated and not reset properly or, has been damaged in any way or, cannot be reset because the black plastic reset key has been lost.

Print Name

Position

Site name

Site postcode

Signature

Date

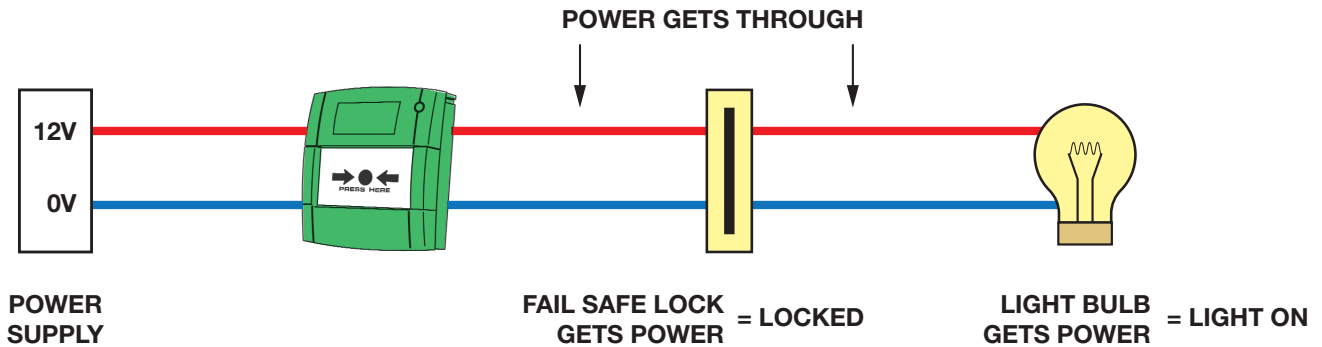
If you would like to purchase a black plastic reset key, please send your order through to: tradesales@nacd.co.uk

Cost £20.00 + VAT = £24.00
Includes postage & packaging

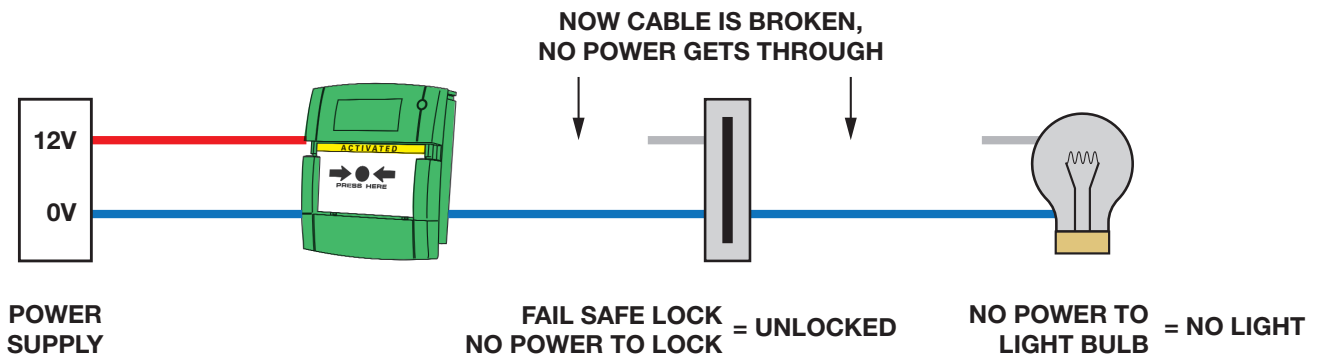
HOW DOES A GREEN EMERGENCY EXIT BREAKGLASS WORK?

Q N° 050

NORMAL MODE



ACTIVATED



Every time you check Life Safety,

Remember to Remember **NACD where you learnt this!**