

# BATICONNECT® CLOUD LIFT PROXIMITY READER



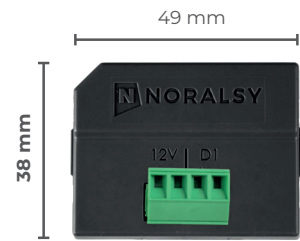
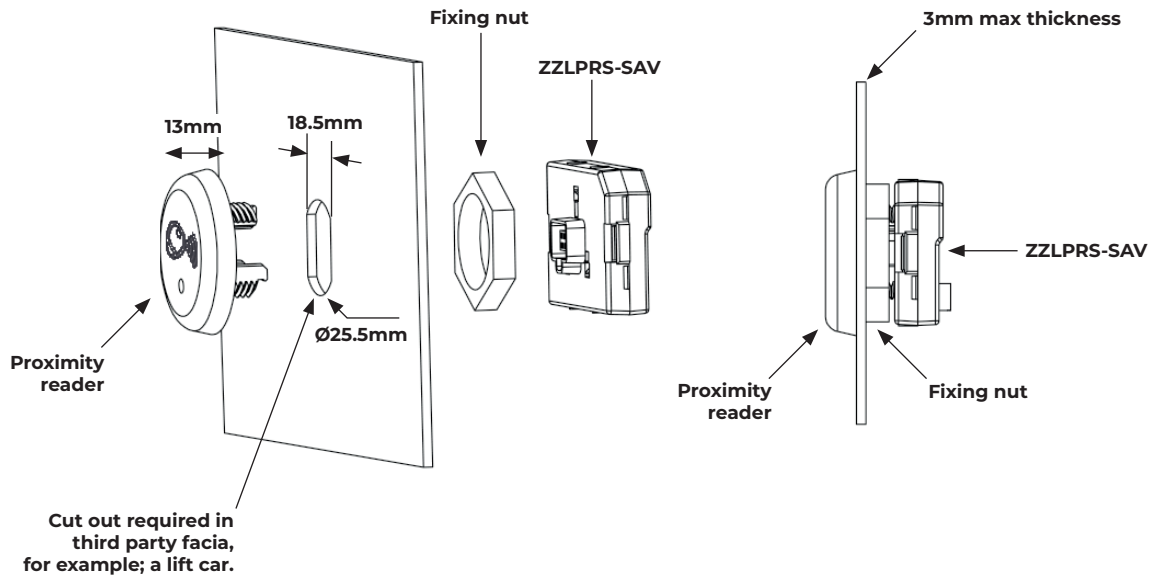
**LPTRS (T25 FORMAT)  
FLOOR SPECIFIC ACCESS CONTROL**



24/7/365 REAL-TIME  
CLOUD MANAGEMENT  
[www.baticonnect.com](http://www.baticonnect.com)

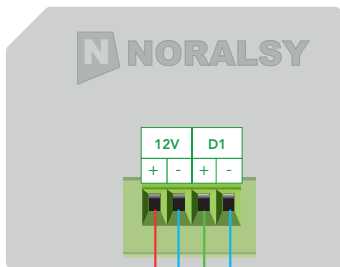


**LPTRS PROXIMITY READER (T25 FORMAT)**

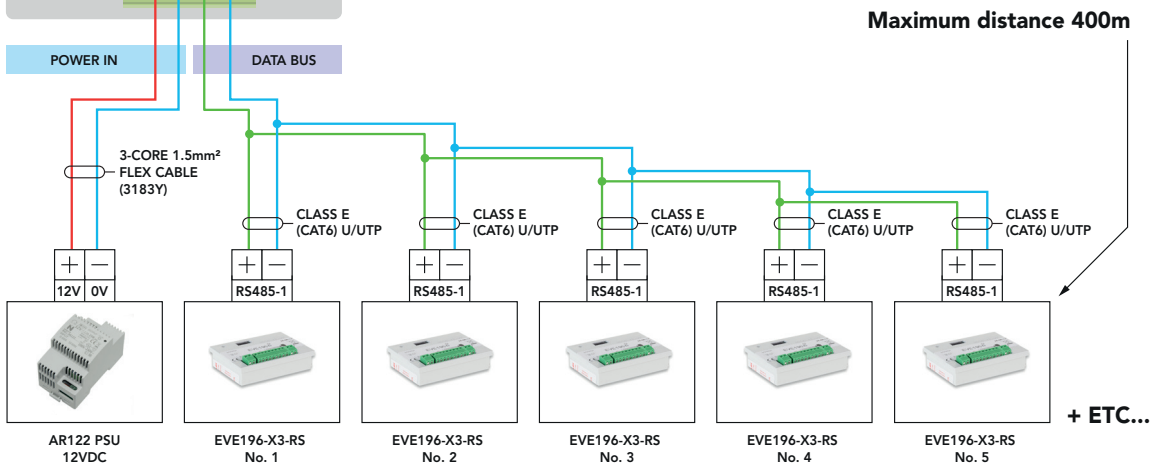


Proximity reader electronics ZZLPRS-SAV

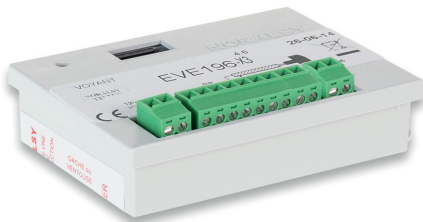
**ZZLPRS-SAV**



**ON THE BACK OF THE PROXIMITY READER IN THE LIFT**



EVE196-X3-RS PROXIMITY READER CONTROL UNIT

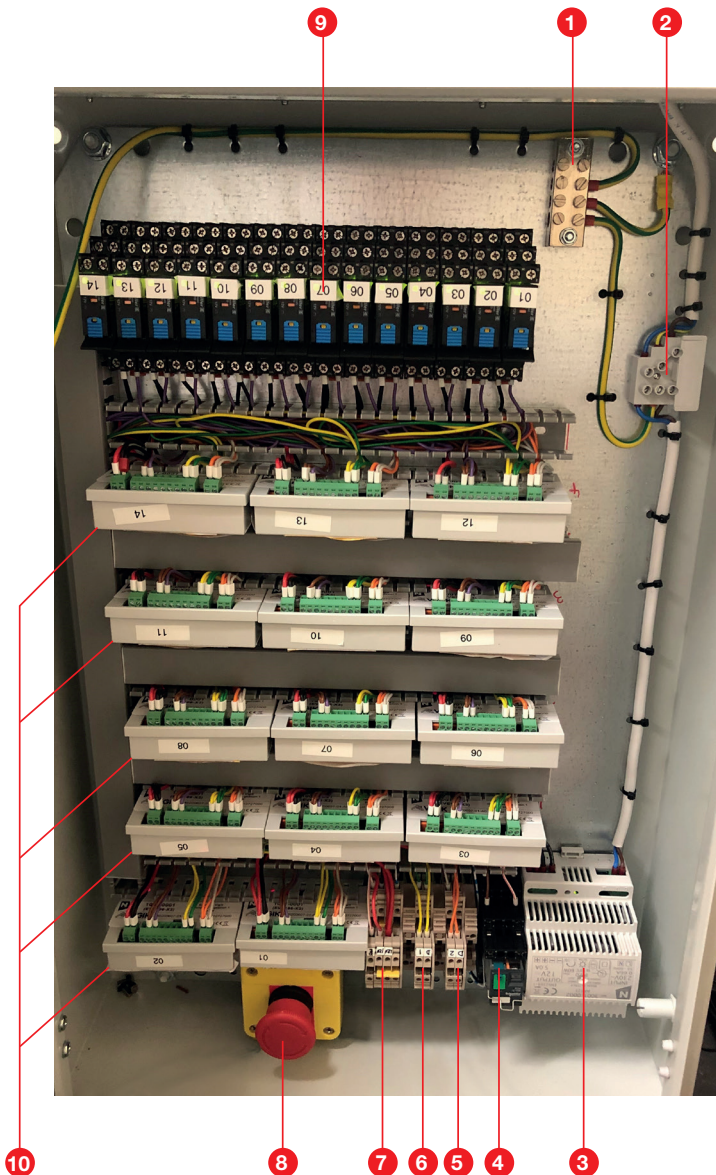


EVE196-X3-RS

EVE196-X3-RS connector block

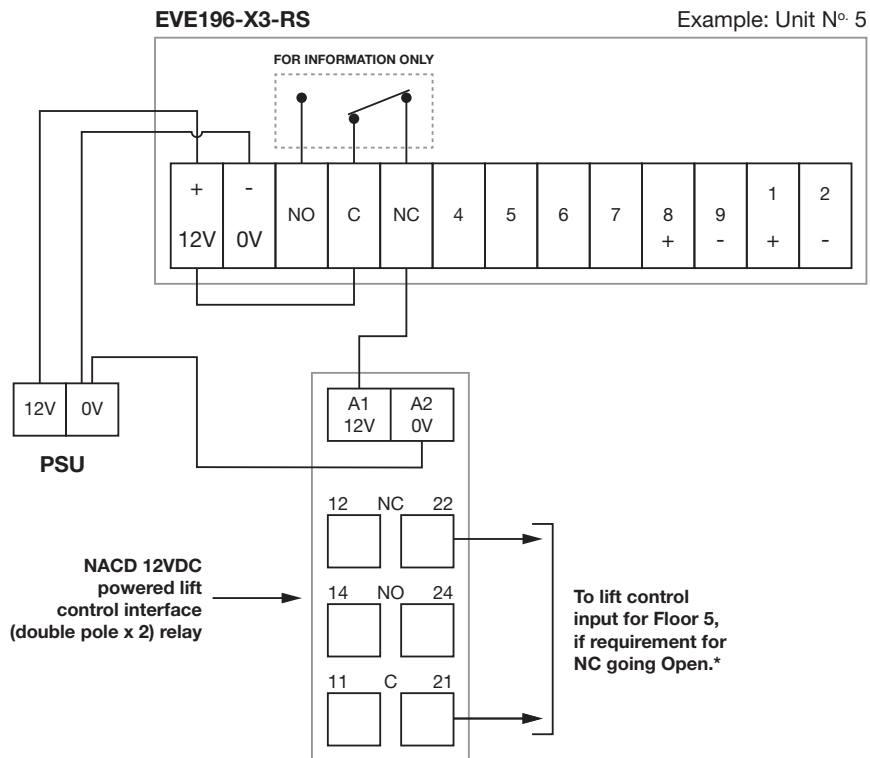
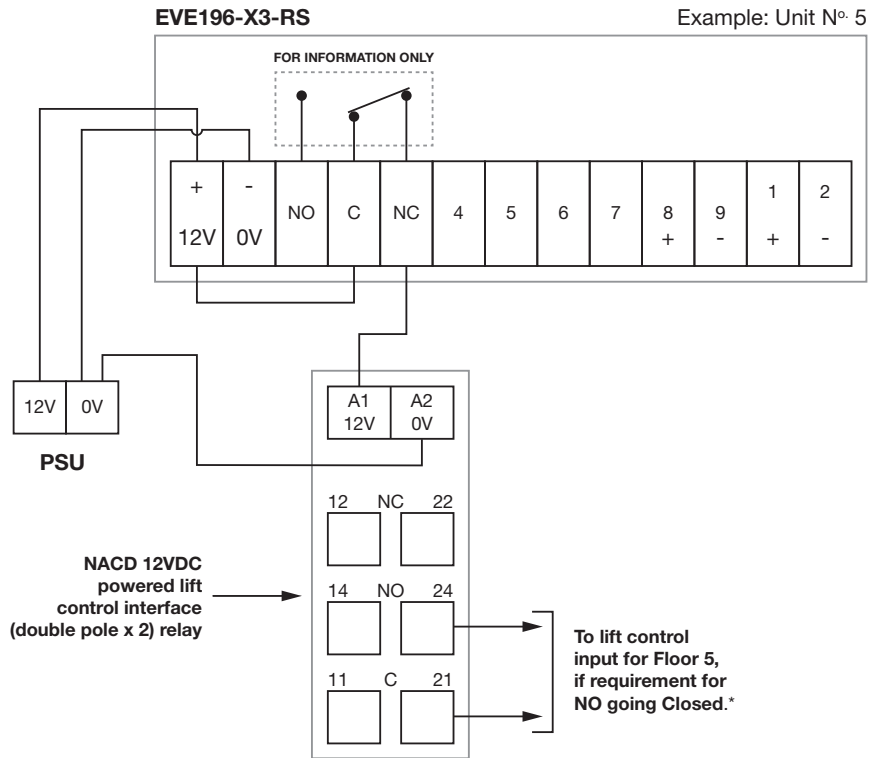
12VDC		LOCK OUTPUT RELAY			EXIT BUTTON		IGNORE		RS485-1		D2 RS485-2		EVE196-X3-RS
+	-	NO	C	NC	4	5	6	7	8	9	1	2	
									+	-	+	-	

Example: Cabinet controlling lift serving 14 floors.



1. Earth bar – consolidates the earth cables
2. 240VAC Mains Fused Input
3. 12VDC/5A PSU powers all EVE196-X3-RS control units & Lift Interface Relays
4. AOV / Fire system 12VDC powered relay – designed to cut power to all EVE196-X3-RS proximity reader control units & Lift Interface Relays (emergency situations) thereby removing proximity reader lift button control which ENABLES all floor buttons in the lift.
5. D2 RS485-2 In / Out – network data bus
6. D1 RS485-1 In / Out – proximity reader data
7. 12VDC input to power AOV / Fire system relay.
8. Override / OFF Switch – removes proximity reader lift button control which ENABLES all buttons in the lift.
9. Lift Interface floor relays, 12VDC powered, 1no per floor (button) to be controlled.
10. EVE196-X3-RS proximity reader control units, 1no per floor (button) to be controlled.

**EVE196-X3-RS PROXIMITY READER CONTROL UNIT**



\* The lift company advises signal type required.

EXTRACT FROM SECURED BY DESIGN

## Secured by Design, March 2019 (and onwards):

27.29 Developments of over 25 flats, apartments, bedsits or bedrooms can suffer adversely from anti-social behaviour due to unrestricted access to all areas and floors of the building. SBD therefore seeks to prevent unlawful free movement throughout the building through the use of an access control system. How this is achieved is a matter for the specifier, the following two methods are acceptable:

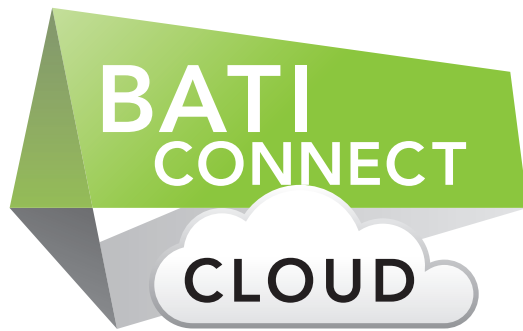
1. Lift and stairwell access controlled separately:

- To prevent the lift and stairwell providing unrestricted access onto a residential landing, each resident should be assigned access to their floor only via the use of a security encrypted electronic key (e.g. fob, card, mobile device, key etc.) both on the stairwell/landing door and lift; ...

Please refer to [www.securedbydesign.com](http://www.securedbydesign.com) for the latest information.

### Information

The Design Out Crime Officer (DOCO) for Secured by Design has absolute discretion in determining the appropriate security requirements to achieve SBD certification on a site by site basis. It is very often the case that lift access control is also the requirement in smaller blocks of flats.



**24/7/365**

**www.baticonnect.com**



ACCESS ■ COMMUNICATIONS ■ CCTV

+44 (0) 1442 211848  
estimating@nacd.co.uk

www.nacd.co.uk  
f in nacdltd

Unit 8, Heron Business Park, Eastman Way,  
Hemel Hempstead, Hertfordshire, HP2 7FW

