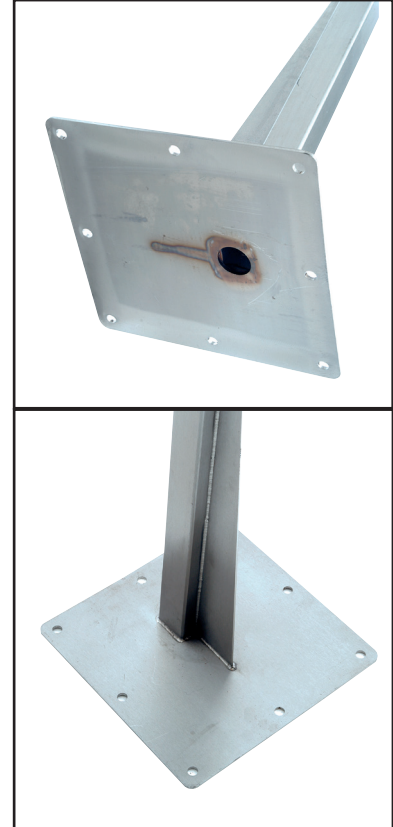


**POSTC, Car Height**

**Q N° 1000**



Fixing plate for HS housing

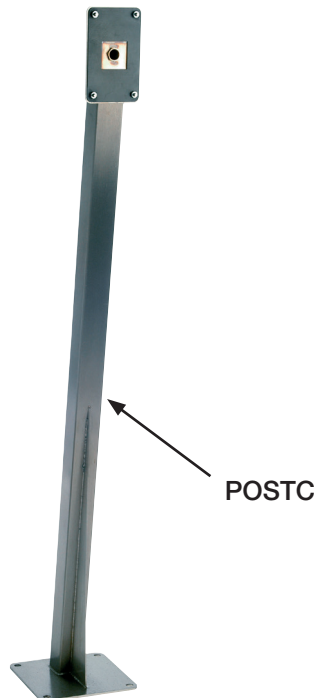


**FIT VERTICALLY**

VERTICAL ↑ ANGLD ↑

**VISITOR PANELS / PROXIMITY READERS / EXIT DEVICES ARE DESIGNED TO BE FITTED VERTICALLY IE. UPRIGHT NOT AT AN ANGLE!**

**NACD EXCLUDE ALL RESPONSIBILITY FOR DAMAGE TO PANEL ELECTRONICS CAUSED BY CONDENSATION WITHIN 3RD PARTY POSTS. ALSO, IF PANEL AGAINST ADVICE FITTED AT AN ANGLE, IT MUST BE UNDER COVER SO PROTECTED FROM DIRECT RAIN / SNOW / SUN.**



Dimensions code: POSTC

**NOTES**

**POSTC**

|   |                                    |
|---|------------------------------------|
| Dimensions of Reinforced Base:                | 190mm x 190mm                      |
| Hole centres for rawl bolts:                  | 160mm x 160mm                      |
| Hole diameter:                                | 13mm (designed for 12mm rawl bolt) |
| No. of bolt holes:                            | 4no                                |
| Hole diameter in base for cable:              | 30mm                               |
| Upright box section of POSTC:                 | 50mm x 3mm wall                    |
| Height from base to centre of mounting plate: | 1.15 metres                        |
| Material                                      | BS304 grade stainless steel        |