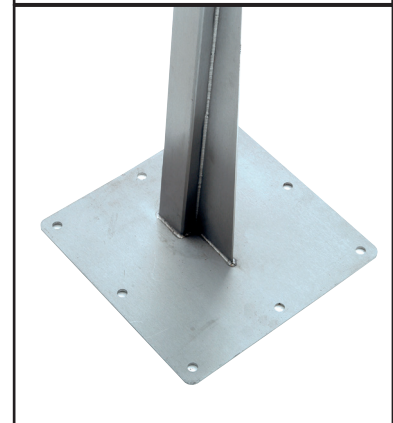
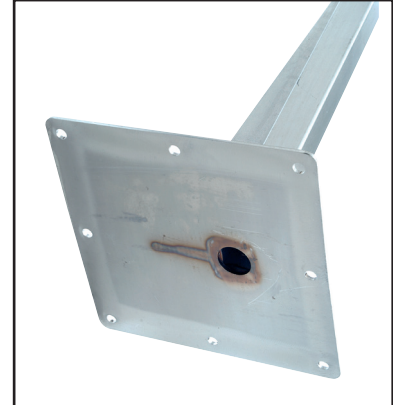


**POSTV, Van Height**

**Q N°- 10001**



Fixing plate for HS housing



**POSTV**

**FIT VERTICALLY**

**VERTICAL** **ANGLED**

**VISITOR PANELS / PROXIMITY READERS / EXIT DEVICES ARE DESIGNED TO BE FITTED VERTICALLY IE. UPRIGHT NOT AT AN ANGLE!**

**NACD EXCLUDE ALL RESPONSIBILITY FOR DAMAGE TO PANEL ELECTRONICS CAUSED BY CONDENSATION WITHIN 3RD PARTY POSTS. ALSO, IF PANEL AGAINST ADVICE FITTED AT AN ANGLE, IT MUST BE UNDER COVER SO PROTECTED FROM DIRECT RAIN / SNOW / SUN.**

Dimensions code: POSTV

**NOTES**

**POSTV, DESIGNED FOR VEHICLES ENTRANCES SPECIFIC TO TRANSIT VANS**

Dimensions of Reinforced Base:	320mm x 320mm
Hole centres for rawl bolts:	20mm in for 1st hole, then on 140mm centres/pitch
Hole diameter:	13mm (designed for 12mm rawl bolt)
No. of bolt holes:	8no
Hole diameter in base for cable:	40mm
Upright box section:	50mm x 3mm wall
Height from base to centre of mounting plate:	1.60 metres
Material	BS304 grade stainless steel