

BATICONNECT® CLOUD PROXIMITY KEY ANTI-CLONE PROTECTION



KEEP OUT OF MY BUILDINGS!

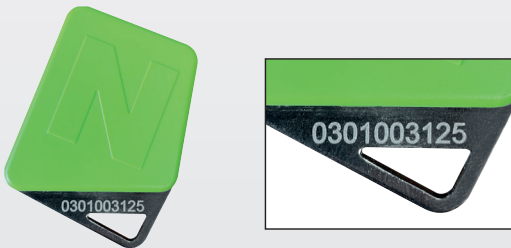
You are back in control



ANTI-CLONE GUARANTEE

for KCP4V proximity keys / TEL433 or TEL8G radio transmitters

KCP4V Proximity Keyfob for residents



- KCP4V proximity keys are each **engraved with a unique 10 digit ID number**.
- The first 5no digits **identify the scheme**, the last 5no digits **identify the user**.
- They are also **sequentially numbered** for ease of administration control and security.

Radio Transmitter for motorists

TEL433



TEL8G



- TEL433 and TEL8G radio transmitters are each **engraved with a unique 10 digit ID number**.
- The first 5no digits **identify the scheme**, the last 5no digits **identify the user**.
- They are also **sequentially numbered** for ease of administration control and security.

This is exactly the same numbering ID principle – copied from the mechanical key manufacturers – as used for the highest security level of mechanical keys available on the market.

It is the only ID numbering methodology that completely guarantees 100% accurate future-proof fully traceable control of every proximity key and radio transmitter.

ORDERING EXTRAS
Online at www.nacd.co.uk



**ANTI-CLONE
GUARANTEE**

Stop unauthorised access into your buildings to protect your residents



Anti-clone protection means that cloning the original proximity key – whether 1 or 100 clones – is pointless because only 1 no proximity key (might be the original or one of the clones) can ever work. BATICONNECT detects and records fraudulent cloning action and sends an alert to the management company specifying both the offending proximity key and flat number.

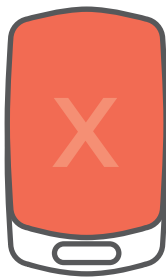
1

Resident makes an unauthorised copy

Resident now has two or more unauthorised copies of the original proximity key fob.



Original keyfob *



Unauthorised copy

* The original proximity key has its unique ID number engraved on it.

2

Resident tries to use the unauthorised copy

Each proximity key fob has its own unique number. BATICONNECT® checks the usage history of the proximity key fob based on its unique number.

EXAMPLE

Resident has 5 no cloned proximity key fobs made by an unscrupulous company – so 6 no proximity key fobs (including original) all with the same valid ID number now exist.

They obviously cannot all have the same usage history so BATICONNECT® selects 1 no and blocks all the rest!

Building management have full control!

1

THE RESIDENT REPORTS

"My proximity key fob is not working!".



2

MANAGEMENT CHECKS ON THE BATICONNECT.COM PORTAL

Event log shows "SUSPECTED APASS FORGERY".

It is, of course, totally unacceptable that the safety of residents and the security of the building be jeopardised by a small minority of residents attempting to bypass the proximity access control system using fake cloned fobs.



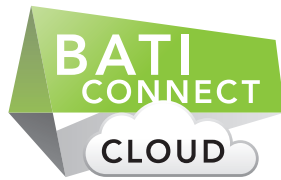
3

WE INSTALLED BATICONNECT® SPECIFICALLY TO PROTECT RESIDENTS AND THE BUILDING!

"Do not try and use FAKE CLONED proximity keys. You are wasting your money because only 1 no proximity key fob can ever work per ID number. Make sure you tell all the other residents!"



**ANTI-CLONE
GUARANTEE**



24/7/365 REAL-TIME
CLOUD MANAGEMENT
baticonnect.com

How BATICONNECT® Anti-Clone works

1 Proximity key fob presented to proximity reader.

2 BATICONNECT® checks if it has a valid ID number.

3 BATICONNECT® checks if its usage history is valid.

4 BATICONNECT® will only grant access if both the ID number and usage history are valid. Any other proximity key fobs with the same ID number but a different usage history will be blocked!

THINK OF BATICONNECT® AS YOUR SAFETY CLOUD.

It makes sure only 1 no proximity key fob
can ever work per ID number.

It also backs everything up, logs and monitors all events, and
regularly receives OS updates of new features and improvements.

It is the connectivity of the future.



Secured by Design



+44 (0)1442 211848
estimating@nacd.co.uk

www.nacd.co.uk
f in nacdltd

Unit 8, Heron Business Park, Eastman Way,
Hemel Hempstead, Hertfordshire, HP2 7FW

