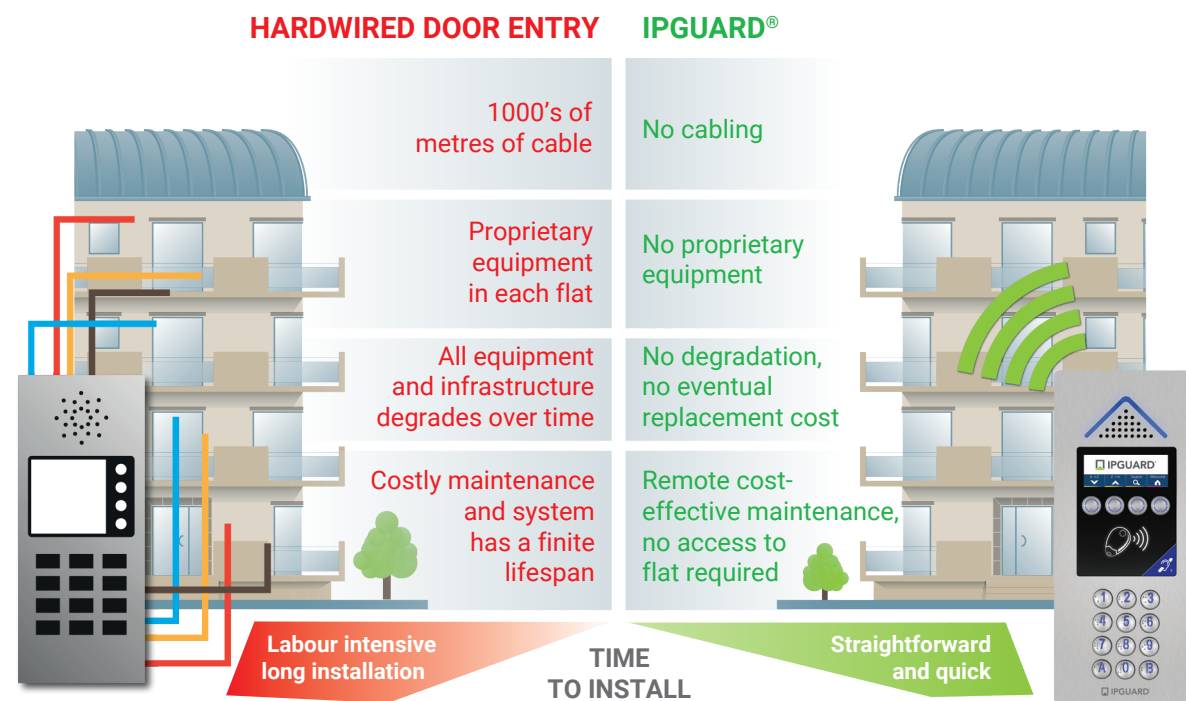


STARTING AGAIN – REPLACING YOUR VISITOR DOOR ENTRY SYSTEM

Your hardwired visitor door entry system is at end of life and needs to be replaced.

Do you really want to reuse old cabling designed for obsolete analogue systems and reinstall proprietary equipment in flats and risers that you know degrades over time?

Of course not, technology today is much smarter and saves you money.



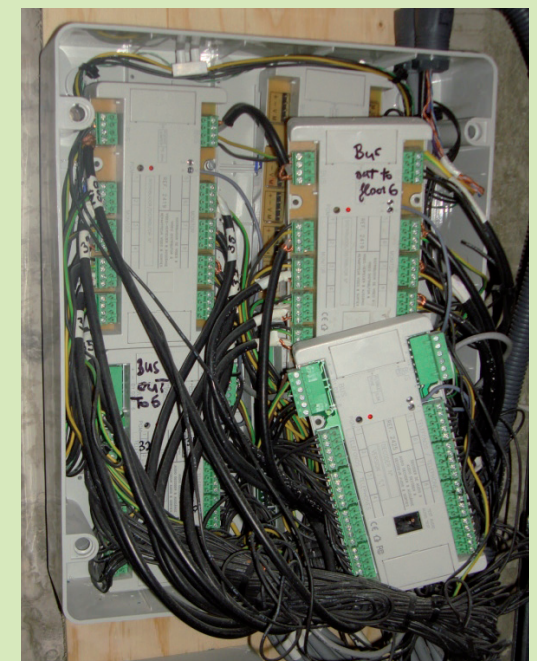
IPGUARD 4G/IP/GSM SMART VIDEO ENTRY SYSTEMS

Each panel can call up to 3000 flats.

HARDWIRED VIDEO ENTRY SYSTEMS

Is this what you want in the riser ? Don't blame the manufacturer.

Where did it go wrong – at install or over the years with different maintenance “engineers”?



Hardwired Video Entry re-using existing infrastructure ← comparison → IPGUARD® 4G/IP/GSM Smart Visitor Door Entry

IPGUARD 4G/IP/GSM

SMART VISITOR ENTRY PANEL

FEATURE	HARDWIRED VIDEO ENTRY RE-USING EXISTING INFRASTRUCTURE	IPGUARD 4G/IP/GSM CLOUD BASED DOOR ENTRY & ACCESS CONTROL SYSTEM
1 Cabling requirements and associated issues	<p>The existing cabling is not compliant to the latest new-installation regulations requiring CPR COMPLIANT to Cca,S1b,d2,a2 cable.</p> <p>See Construction Products Regulations (CPR) - BS6701 and ISO/IEC 11801 – 6: 2017 Part 6: Distributed Building Services (or BS EN 50173-6:2018 Part 6: Distributed Building Services).</p> <p>The reasons for re-using the existing cabling are to minimise cost and disruption, to avoid the need to reissue fire certifications and, of course, to avoid redecorating.</p> <p>Installing a “new” hardwired system using old cabling is never a good mix and will never come with a full guarantee.</p> <p>You will also not get the latest technology IP hardwired door entry because it will not work with old analogue cabling.</p>	<p>Modern technology removes the need for infrastructure cabling.</p> <p>The IPGUARD 4G/IP/GSM system is smart technology like your iPhone or Android – no cabling required.</p>
2 Proprietary equipment	<p>Hardwired visitor door entry systems require proprietary receiving equipment in every flat and control equipment in the risers.</p> <p>This benefits the manufacturer and the maintenance company only.</p> <p>This is an unnecessary expense and liability.</p>	<p>Everything the IPGUARD 4G/IP/GSM panel needs to communicate with residents with live audio and video and control the door is integral to it.</p> <p>Nothing else is required.</p>
3 Monitors	<p>Hardwired visitor door entry systems require a fixed wall mounted monitor per flat.</p> <p>The more flats the higher the install and maintenance costs.</p> <p>Finite life with more problems as time goes by – engineer call-out and access to the flat required.</p>	<p>The IPGUARD 4G/IP/GSM simply video calls residents on all their smart devices iPhones, Androids, iPads, tablets.</p> <p>It will also call landline phones for those who still use one at home.</p> <p>Gone are the days of fixed system proprietary equipment on your wall.</p> <p>The video call comes to you not the other way around.</p>

Hardwired Video Entry re-using existing infrastructure ← comparison → IPGUARD® 4G/IP/GSM Smart Visitor Door Entry

IPGUARD 4G/IP/GSM

SMART VISITOR ENTRY PANEL

FEATURE	HARDWIRED VIDEO ENTRY RE-USING EXISTING INFRASTRUCTURE	IPGUARD 4G/IP/GSM CLOUD BASED DOOR ENTRY & ACCESS CONTROL SYSTEM
4 Technology	<p>What new features are you getting from replacing your old end-of-life hardwired video monitor with a new video monitor re-using the existing cabling?</p> <p>If you still choose to stay with hardwired: look for a system that, for Equality Act 2010 compliance purposes, has flat video monitors with WIFI connectivity for auto-forwarding of visitor calls to Android or IOS smart devices.</p>	<p>IPGUARD 4G/IP/GSM systems are smart technology.</p> <p>That means bluetooth enabled, wireless, HD quality screens, handsfree access control, do not disturb features, auto-forwarding, automatic picture capture of all visitors etc.</p> <p>The list of features is endless and always growing because it is a Smart App on your smart devices and like all App's it is constantly getting free updates with more features.</p>
6 Future-proofing	<p>A fixed video monitor on the wall is the opposite of future-proofing because it just gets older until it stops working.</p>	<p>The IPGUARD 4G/IP/GSM is the definition of future-proof because it is a smart technology product.</p> <p>It communicates with smart phones / devices using either 4G GSM mobile signal or IP (internet) whatever is best at any given moment.</p> <p>If your smart device is connected to your home or Starbucks WIFI the video call will come through via WIFI, if you are sitting on the beach it will come through via 4G GSM.</p>
7 Control	<p>The Building Management Company has no means of identifying nuisance residents who let anybody into the building.</p>	<p>The Building Management Company has total control and management oversight which means security for the building.</p>
8 Disruption to the residents	<p>The replacement visitor door entry system will take a long time to install, every flat needs to be accessed to change the video monitor (what happens if the resident is on holiday?).</p> <p>Every bit of control equipment in the risers will need to be replaced and reconnected to each flat.</p> <p>All this expense and disruption for no benefit. What is better about the new system other than it works ?</p>	<p>No disruption, no access to flats required.</p> <p>The IPGUARD 4G/IP/GSM panel is installed and fully operational the same day. It does not matter whether the building has 5 flats or 3000 flats.</p>

Hardwired Video Entry re-using existing infrastructure ← comparison → IPGUARD® 4G/IP/GSM Smart Visitor Door Entry

IPGUARD 4G/IP/GSM

SMART VISITOR ENTRY PANEL

FEATURE	HARDWIRED VIDEO ENTRY RE-USING EXISTING INFRASTRUCTURE	IPGUARD 4G/IP/GSM CLOUD BASED DOOR ENTRY & ACCESS CONTROL SYSTEM
9 Security	<p>The owner of the flat cannot control who is allowed to open the building entrance door from the flat. Anybody in the flat ie child, guest, vulnerable person etc can press the door open button on the video monitor.</p> <p>The Building Management Company has no control over anything.</p>	<p>The IPGUARD 4G/IP/GSM system is feature packed because it is part of the BATICONNECT® CLOUD SERVICE.</p> <p>BATICONNECT® CLOUD is what makes it so special. It is the service that it provides that is so important.</p> <p>The Building Management Company can access all sites 24/7/365 from anywhere using any internet enabled device; to program telephone numbers, fobs and radio transmitters, receive alerts, grant temporary access to contractors, deny access to evicted tenants or abusive partners, view in real time or download a log of system events.</p> <p>BATICONNECT® backs up all data automatically and includes a fully searchable database.</p>
10 Total cost of ownership	<p>Total cost of ownership = Upfront Capital Investment (INSTALL COST) + On-going maintenance</p> <p>High cost of equipment and installation.</p> <p>High administration costs organising costly engineer site visits for maintenance.</p> <p>System replacement cost because all proprietary equipment installed will fail – that's why you are replacing the current system !</p>	<p>Low cost of equipment and install. No liability to maintain equipment in risers or flats because there is none.</p> <p>No eventual replacement and install costs to amortise because there is no equipment that is deteriorating with age.</p> <p>BATICONNECT® CLOUD SERVICE subscription which also includes unlimited video calls, programming, management etc.</p>
11 Added benefits	<p>None.</p>	<ul style="list-style-type: none"> Residents are using their own smart devices. They also replace their own smart devices, at their own cost, over time with later better models. Mobile communications 3G/4G/5G keeps getting better and faster. Regular OS (operating system) updates are uploaded into IPGUARD 4G/IP/GSM panels worldwide (same principle as Apple/Google with your smart devices). Automatic IPGUARD Smart App updates downloaded to your smart devices. BATICONNECT® CLOUD SERVICE portal is constantly evolving. <p>All of the above are free – so your IPGUARD 4G/IP/GSM system improves over time – which is the exact opposite of a hardwired video entry system!</p>

Hardwired Video Entry re-using existing infrastructure ← comparison → IPGUARD® 4G/IP/GSM Smart Visitor Door Entry

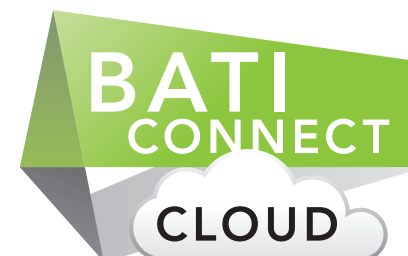
IPGUARD 4G/IP/GSM

SMART VISITOR ENTRY PANEL

FEATURE	HARDWIRED VIDEO ENTRY RE-USING EXISTING INFRASTRUCTURE	IPGUARD 4G/IP/GSM CLOUD BASED DOOR ENTRY & ACCESS CONTROL SYSTEM
12 Equality Act Compliance	<p>Forcing an elderly, visually / hearing impaired, arthritic or physically / mobility disabled person to answer a call on a fixed wall mounted video monitor in their flat hallway can NEVER be compliant with the Equality Act 2010.</p> <p>Full PDF explaining Equality Act 2010 requirements available for free download on our web site.</p>	<p>The IPGUARD 4G/IP/GSM system is fully Equality Act 2010 compliant both for visitors and residents.</p> <p>Full PDF explaining how the IPGUARD® covers every Equality Act 2010 requirement available for free download on our web site.</p>
13 Management of the system	<p>None available to the Building Management Company for the Video Monitor Entry system.</p>	<p>BATICONNECT.COM</p> <p>The Building Management Company has full 24/7/365 remote management of the system.</p>
14 Access control	<p>Separate system.</p>	<p>Proximity access control, keypad access control, radio for vehicle gates, trades facilities, contractor access features, handsfree bluetooth access, mobile access and much more are an integral part of the IPGUARD 4G/IP/GSM system.</p> <p>Everything you need for the building is included – all on the BATICONNECT® CLOUD portal. It could not be made easier.</p>



IPGUARD
4G/IP/GSM SMART
Visitor Door Entry



**24/7/365 REAL-TIME
CLOUD MANAGEMENT**
baticonnect.com